

Borehole Freight

Application Summary

This is the traditional design used for decades. It utilizes a single-stage hydraulic jack installed in the ground. The jack is located directly under the car, near the center of the platform.

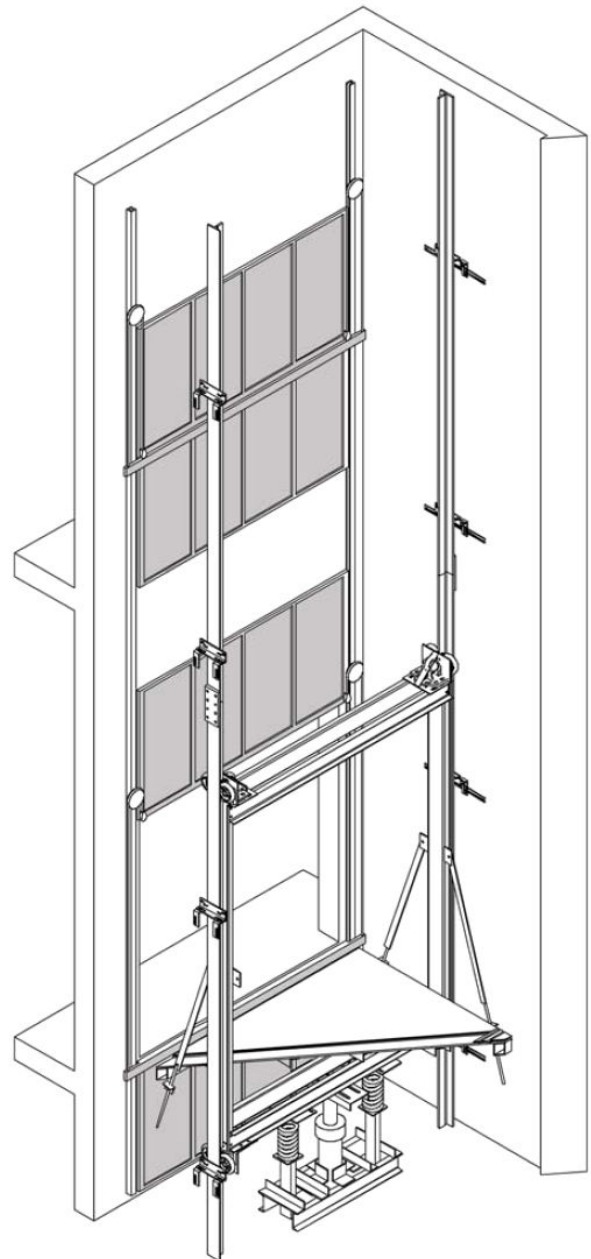
- This design can accommodate both **passenger** and **freight** applications.

Advantages:

- Usually the lowest material cost application.
- Accommodates front and rear openings in any configuration.
- No extensive pit or overhead is required.
- Available for both low and high capacity cars.
- Of all the application types, this equipment package is the easiest to install.

Disadvantages:

- Oil contamination in the ground is possible. As a precaution, the jack can be enclosed in PVC pipe. Areas with frequent seismic activity will have the greatest risk of oil contamination.
- The jack must go down into the ground roughly the same distance as the desired travel. Drilling a jack hole is expensive and may be nearly impossible in certain structural or geologic conditions.



Borehole Freight

Cap.	Platform	Hoistway With Power Regular Type Doors	Hoistway With Power Pass Type Doors	Pit Depth	Front (F) Rear (R)	Clear Inside With Single Section	Clear Inside With Two Section	Door Width and Height
4000	7'-0" x 8'-0"	8'-8" x 8'-8"	8'-8" x 8'-9 ¾"	4'-6"	F	6'-8" x 7'-7"	6'-8" x 7'-4 ½"	6'-8" x 8'-0"
4000	7'-0" x 8'-0"	8'-8" x 8'-10"	8'-8" x 9'-1 ½"	4'-6"	F/R	6'-8" x 7'-6"	6'-8" x 7'-1"	6'-8" x 8'-0"
5000	8'-0" x 9'-0"	9'-8" x 9'-8"	9'-8" x 9'-9 ¾"	4'-6"	F	7'-8" x 8'-7"	7'-8" x 8'-4 ½"	7'-8" x 8'-0"
5000	8'-0" x 9'-0"	9'-8" x 9'-10"	9'-8" x 10'-1 ½"	4'-6"	F/R	7'-8" x 8'-6"	7'-8" x 8'-1"	7'-8" x 8'-0"
6000	10'-4" x 10'-0"	12'-0" x 10'-8"	12'-0" x 10'-9 ¾"	4'-6"	F	10'-0" x 9'-7"	10'-0" x 9'-4 ½"	10'-0" x 8'-0"
6000	10'-4" x 10'-0"	12'-0" x 10'-10"	12'-0" x 11'-1 ½"	4'-6"	F/R	10'-0" x 9'-6"	10'-0" x 9'-1"	10'-0" x 8'-0"
8000	10'-4" x 12'-0"	12'-0" x 12'-8"	12'-0" x 12'-9 ¾"	4'-6"	F	10'-0" x 11'-7"	10'-0" x 11'-4 ½"	10'-0" x 8'-0"
8000	10'-4" x 12'-0"	12'-0" x 12'-10"	12'-0" x 13'-1 ½"	4'-6"	F/R	10'-0" x 11'-6"	10'-0" x 11'-1"	10'-0" x 8'-0"
10000	10'-4" x 14'-0"	12'-0" x 14'-8"	12'-0" x 14'-9 ¾"	4'-6"	F	10'-0" x 13'-7"	10'-0" x 13'-4 ½"	10'-0" x 8'-0"
10000	10'-4" x 14'-0"	12'-0" x 14'-10"	12'-0" x 15'-1 ½"	4'-6"	F/R	10'-0" x 13'-6"	10'-0" x 13'-1"	10'-0" x 8'-0"
12000	12'-4" x 12'-0"	14'-0" x 12'-8"	14'-0" x 12'-9 ¾"	4'-6"	F	12'-0" x 11'-7"	12'-0" x 11'-4 ½"	12'-0" x 8'-0"
12000	12'-4" x 12'-0"	14'-0" x 12'-10"	14'-0" x 13'-1 ½"	4'-6"	F/R	12'-0" x 11'-6"	12'-0" x 11'-1"	12'-0" x 8'-0"
15000	12'-4" x 16'-0"	14'-0" x 16'-8"	14'-0" x 16'-9 ¾"	5'-0"	F	12'-0" x 15'-7"	12'-0" x 15'-4 ½"	12'-0" x 8'-0"
15000	12'-4" x 16'-0"	14'-0" x 16'-10"	14'-0" x 17'-1 ½"	5'-0"	F/R	12'-0" x 15'-6"	12'-0" x 15'-1"	12'-0" x 8'-0"
20000	12'-4" x 20'-0"	14'-0" x 20'-8"	14'-0" x 20'-9 ¾"	5'-0"	F	12'-0" x 19'-7"	12'-0" x 19'-4 ½"	12'-0" x 8'-0"
20000	12'-4" x 20'-0"	14'-0" x 20'-10"	14'-0" x 21'-1 ½"	5'-0"	F/R	12'-0" x 19'-6"	12'-0" x 19'-1"	12'-0" x 8'-0"
25000	14'-4" x 20'-0"	16'-0" x 20'-8"	16'-0" x 20'-9 ¾"	5'-6"	F	14'-0" x 19'-7"	14'-0" x 19'-4 ½"	14'-0" x 8'-0"
25000	14'-4" x 20'-0"	16'-0" x 20'-10"	16'-0" x 21'-1 ½"	5'-6"	F/R	14'-0" x 19'-6"	14'-0" x 19'-1"	14'-0" x 8'-0"

Notes:

Overhead dimensions are based on 6 foot high car gate.

Two section car gates are not recommended for high usage installations or wide openings.

For extra high door opening requirements, or special conditions, consult your representative.

ASME A17.1 code requirements for minimum rated capacity are as follows:

Class A (General Freight Loading) – 50 lbs. per sq. ft.

Class B (Motor Vehicle Loading) – 30 lbs. per sq. ft.

Class C-1 (Industrial Truck Loading – truck carried by elevator) – 50 lbs. per sq. ft., but not less than load, including weight of truck.

Class C-2 (Industrial Truck Loading – truck is normally used for loading and unloading only, and is not usually carried by elevator) – for elevators of 20,000 lbs. capacity or less capacity shall equal the weight of the loaded truck – maximum load on platform during loading and unloading not exceed 150% of rated load.

Class C-3 (Other loading with heavy concentrations where truck is not usually used) – 50 lbs. per sq. ft., but not less than load.

Note: Square feet area of platform is determined by net inside area.

General Note:

1 lb. = 0.454 kg. 1ft² = 9.29 E-2m²



Lift Solutions, Inc

tel: 360/862-8328

fax: 425/671-0758

www.liftsolutions.net

info@liftsolutions.net